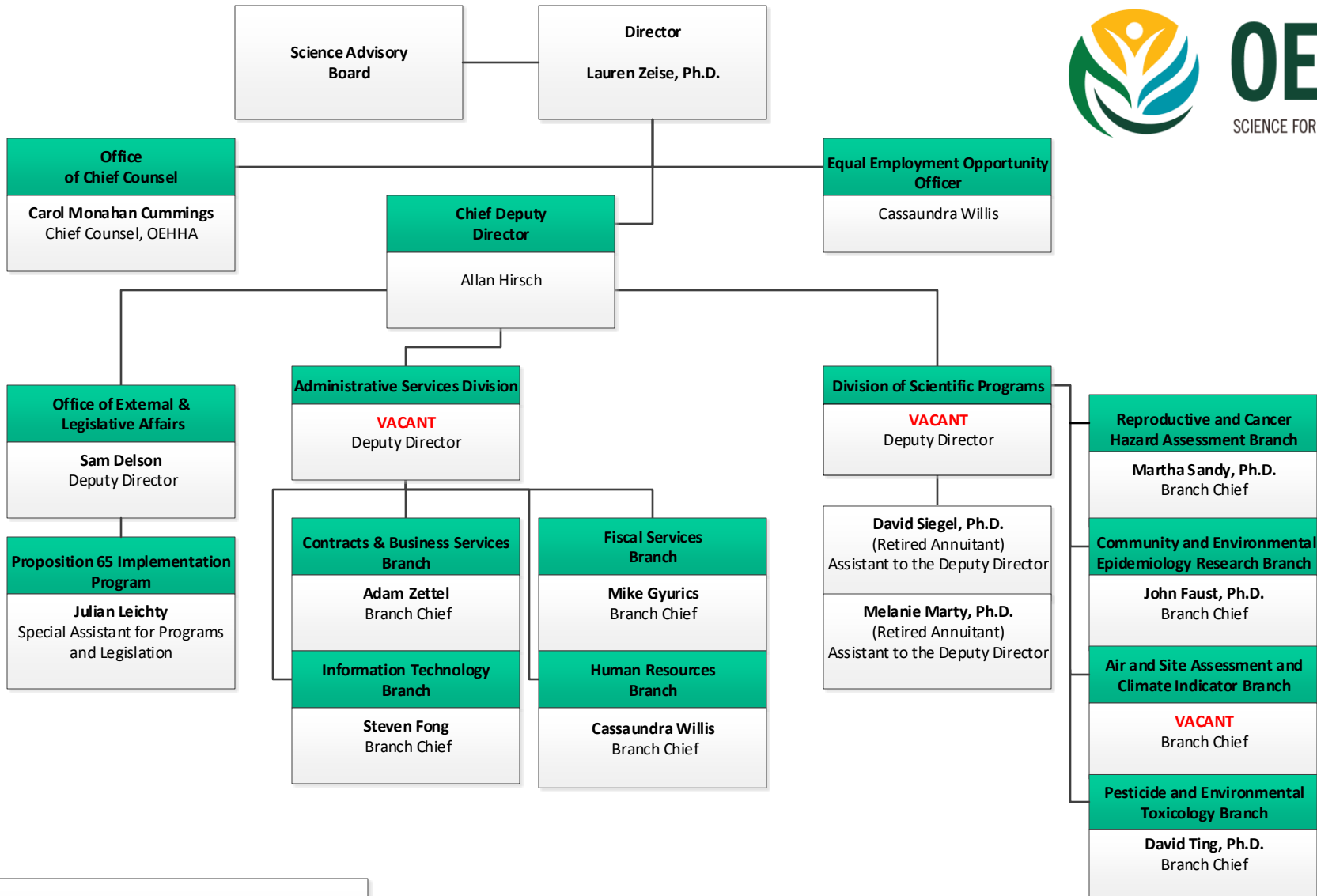


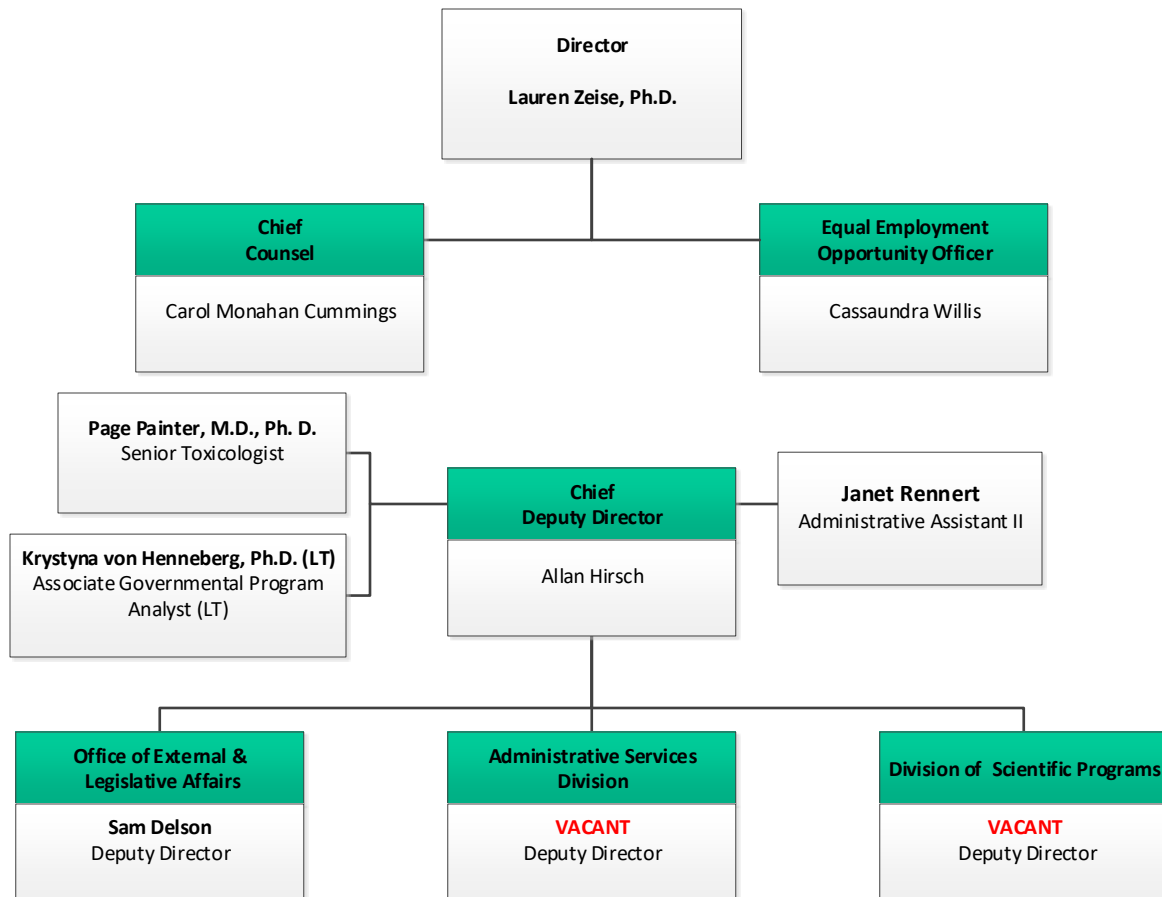
# OFFICE OF ENVIRONMENTAL HEALTH HAZARD ASSESSMENT ORGANIZATIONAL CHART



-----  
Lauren Zeise, Ph.D.  
Director

# OFFICE OF ENVIRONMENTAL HEALTH HAZARD ASSESSMENT

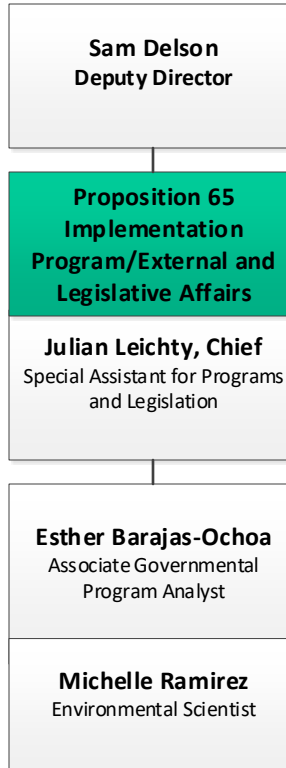
## Executive Office



Lauren Zeise, Ph.D.  
Director

# OFFICE OF ENVIRONMENTAL HEALTH HAZARD ASSESSMENT

## Office of External and Legislative Affairs

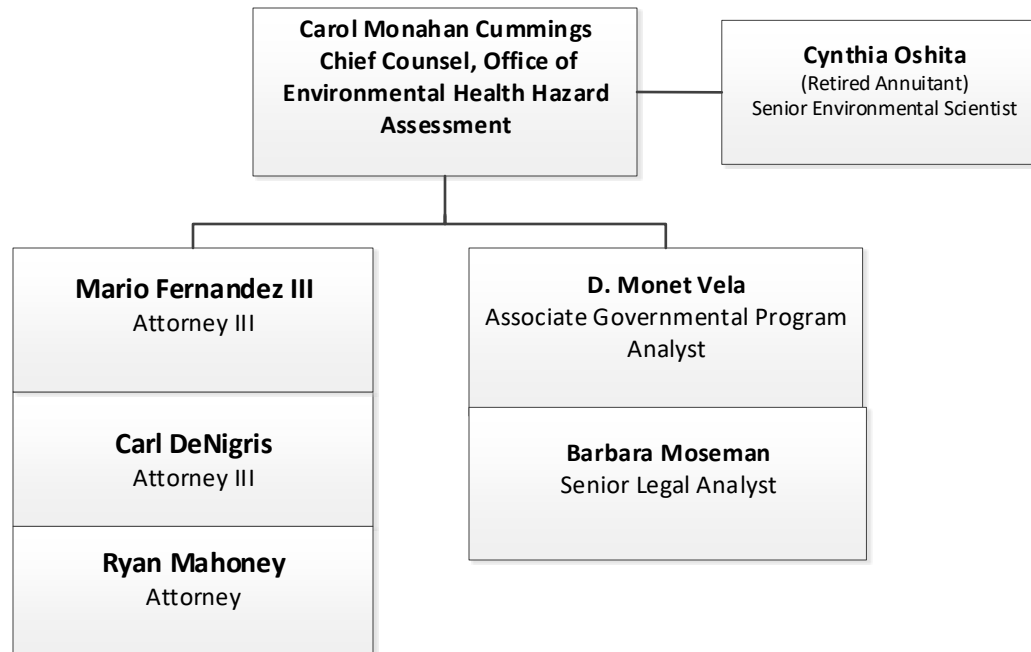


---

Sam Delson, Deputy Director

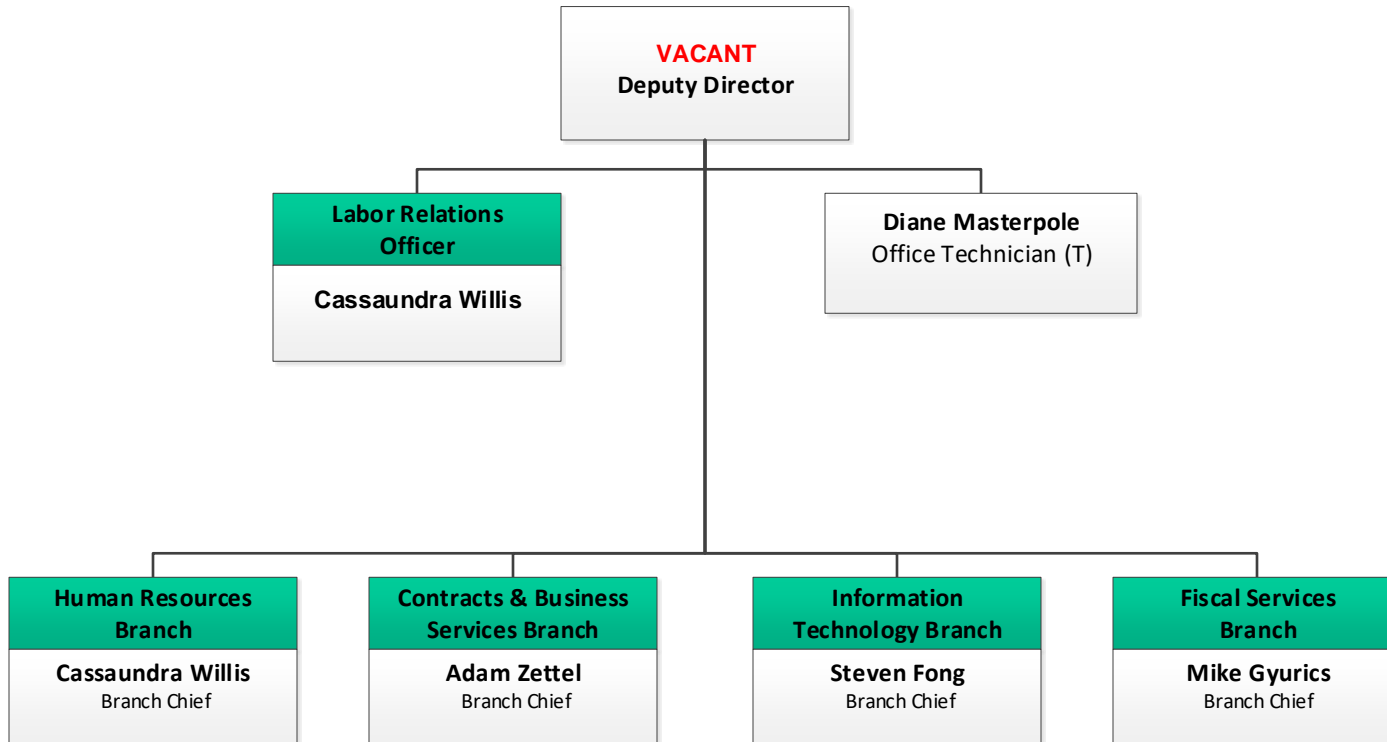
# OFFICE OF ENVIRONMENTAL HEALTH HAZARD ASSESSMENT

## Office of Chief Counsel



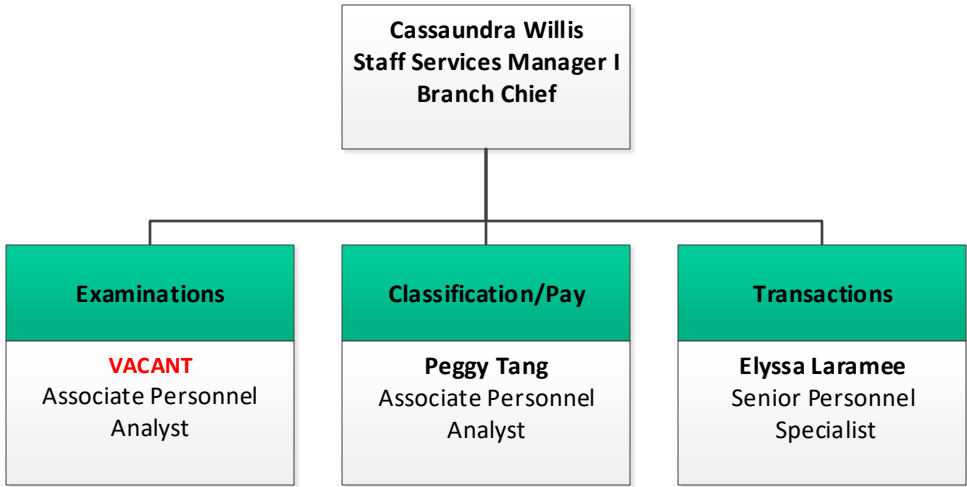
Carol Monahan Cummings, Chief Counsel,  
OEHHA

**OFFICE OF ENVIRONMENTAL HEALTH HAZARD ASSESSMENT**  
**Administrative Services Division**



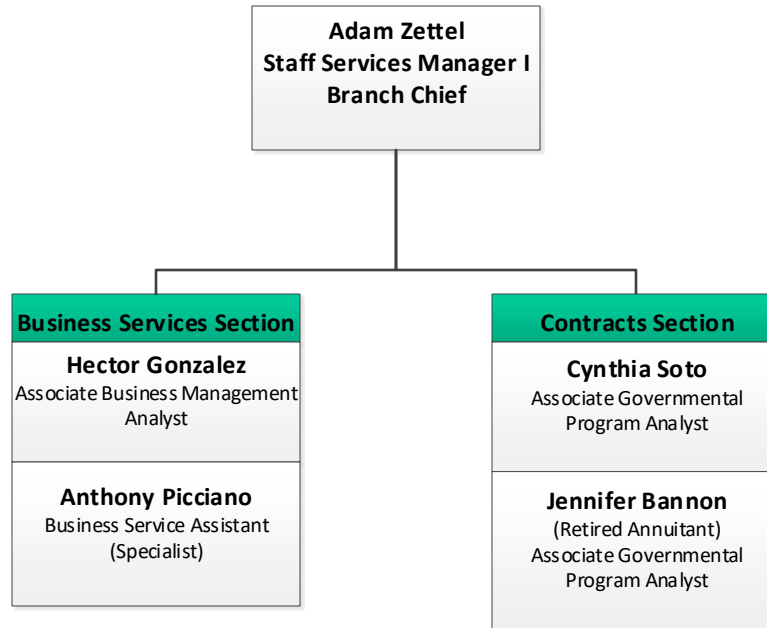
-----  
VACANT, Deputy Director

**OFFICE OF ENVIRONMENTAL HEALTH HAZARD ASSESSMENT**  
**Human Resources Branch**



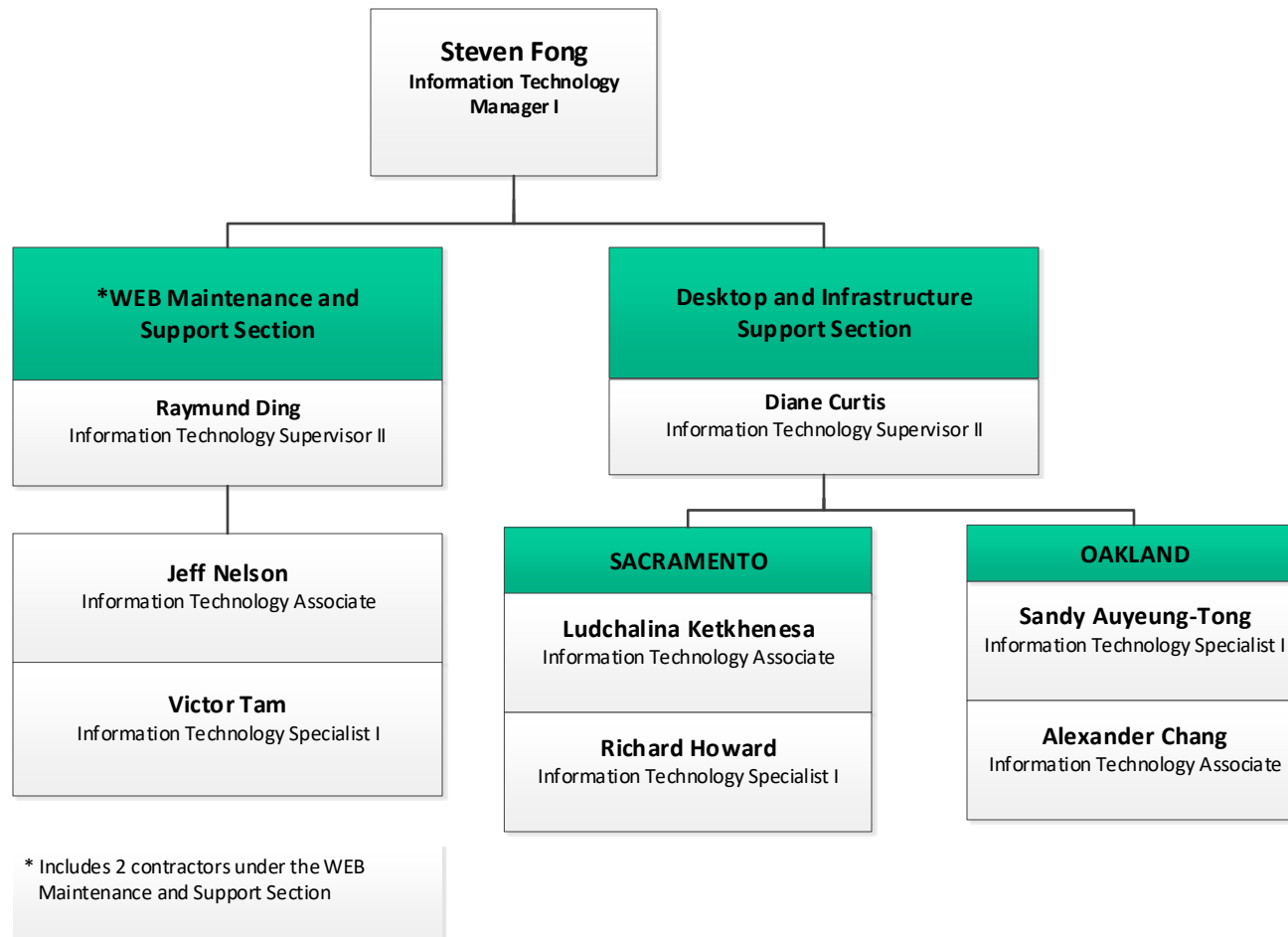
-----  
Cassandra Willis, Branch Chief

**OFFICE OF ENVIRONMENTAL HEALTH HAZARD ASSESSMENT**  
**Contracts and Business Services Branch**



-----  
Adam Zettel, Branch Chief

**OFFICE OF ENVIRONMENTAL HEALTH HAZARD ASSESSMENT**  
**Information Technology Branch**

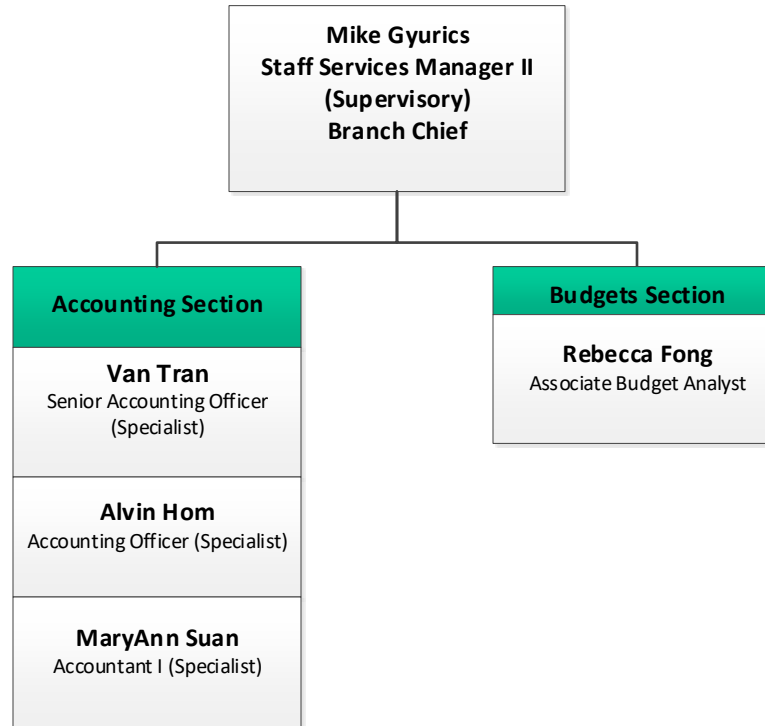


-----  
Steven Fong, Branch Chief



# OFFICE OF ENVIRONMENTAL HEALTH HAZARD ASSESSMENT

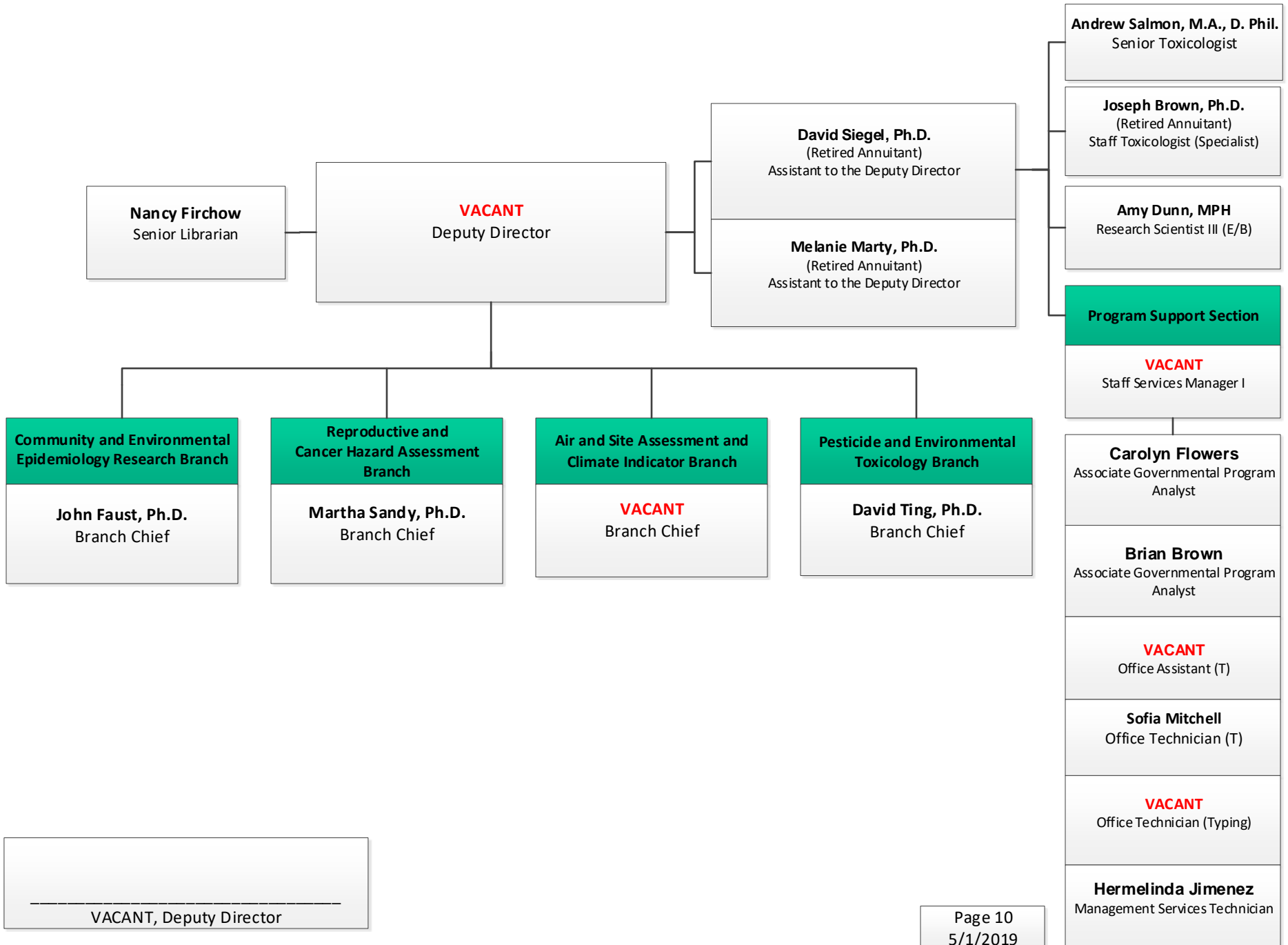
## Fiscal Services Branch



-----  
Mike Gyurics, Branch Chief

# OFFICE OF ENVIRONMENTAL HEALTH HAZARD ASSESSMENT

## Division of Scientific Programs



-----  
VACANT, Deputy Director

# OFFICE OF ENVIRONMENTAL HEALTH HAZARD ASSESSMENT

## Community and Environmental Epidemiology Research Branch

**John Faust, Ph.D.**  
Supervising Toxicologist (Managerial)  
Branch Chief

**Deldi Reyes, M.S.**  
\*Environmental Program  
Manager I (Supervisory)

### Community Assessment and Research Section

**VACANT**  
Senior Toxicologist

**Walker Wieland**  
Research Scientist II (Physical/Engineering  
Sciences)

**Komal Bangia, MPH (.8)**  
Research Scientist III (E/B)

**Laura August, MPH**  
Research Scientist III (E/B)

**Andrew Slocombe, MS**  
Research Scientist III (E/B)

### Community Health and Environmental Impacts Section

**VACANT**  
Research Scientist IV (E/B)

**Amy Budahn, MPH**  
Senior Environmental Scientist (Specialist)

**Laurel Plummer, Ph.D.**  
Staff Toxicologist (Specialist)

**Karen Riveles Carrera, Ph.D., MPH**  
Staff Toxicologist (Specialist)

### Air and Climate Epidemiology Section

**Rupa Basu, MPH, Ph.D., Chief**  
Research Scientist  
Supervisor I (E/B)

**Xiangmei Wu, Ph.D.**  
Research Scientist III (E/B)

**Dharshani Pearson, MPH (.8)**  
Research Scientist I (E/B)

**Rachel Broadwin, MPH**  
Research Scientist III (E/B)

**Keita Ebisu, Ph.D.**  
Research Scientist III (E/B)

**Brian Malig, MPH**  
Research Scientist III (E/B)

**Shankar Prasad, M.B.B.S.**  
Staff Toxicologist (Specialist)

**Heather Bolstad, Ph.D.**  
Staff Toxicologist (Specialist)

**Carolina Balazs, Ph.D. (.6) (LT)**  
Research Scientist III (E/B) (LT)

**VACANT**  
Staff Toxicologist (Specialist)

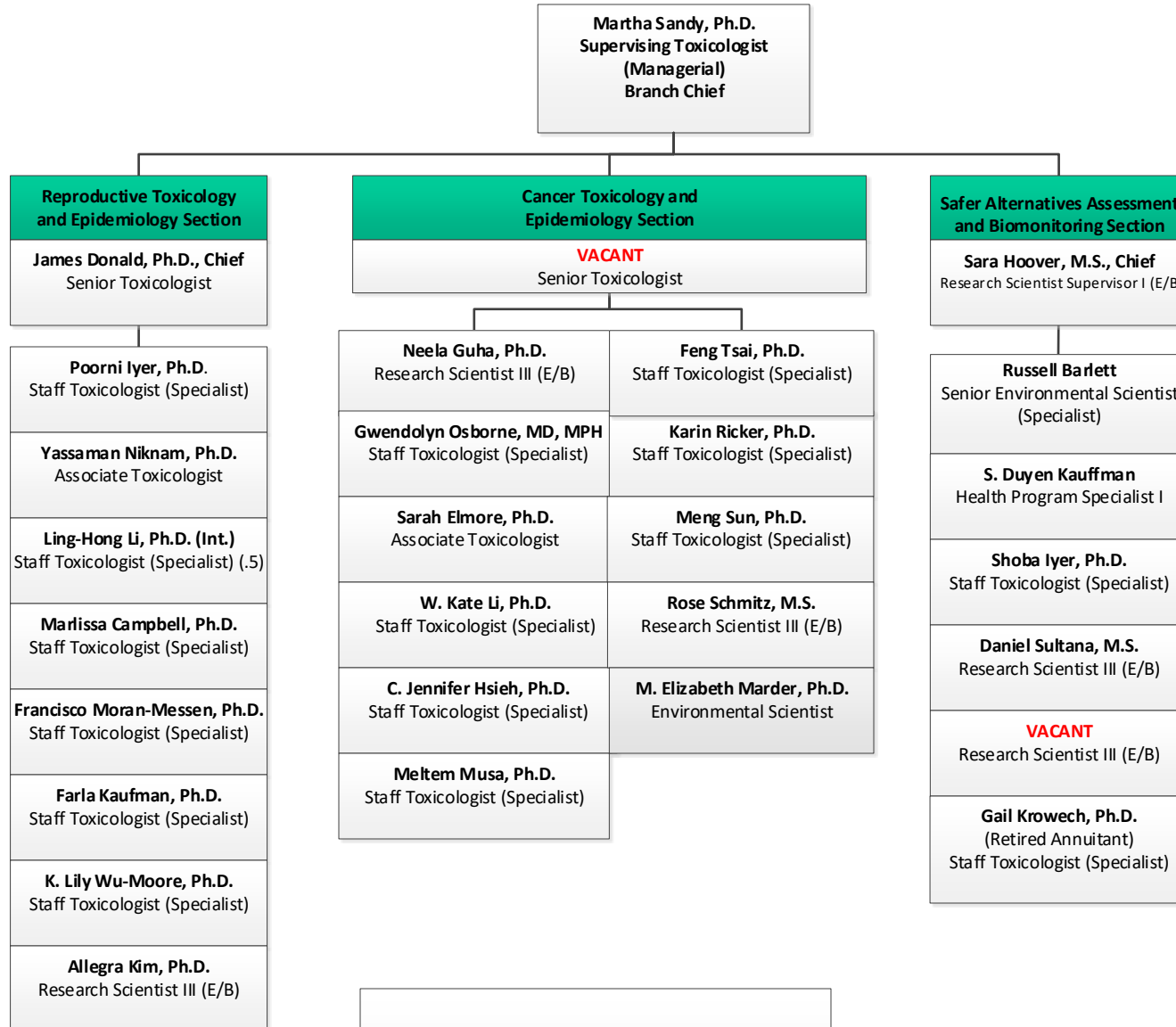
811-130 Sacramento  
811-135 Oakland

John Faust, Ph.D., Branch Chief

\*On Loan to CalEPA

# OFFICE OF ENVIRONMENTAL HEALTH HAZARD ASSESSMENT

## Reproductive and Cancer Hazard Assessment Branch

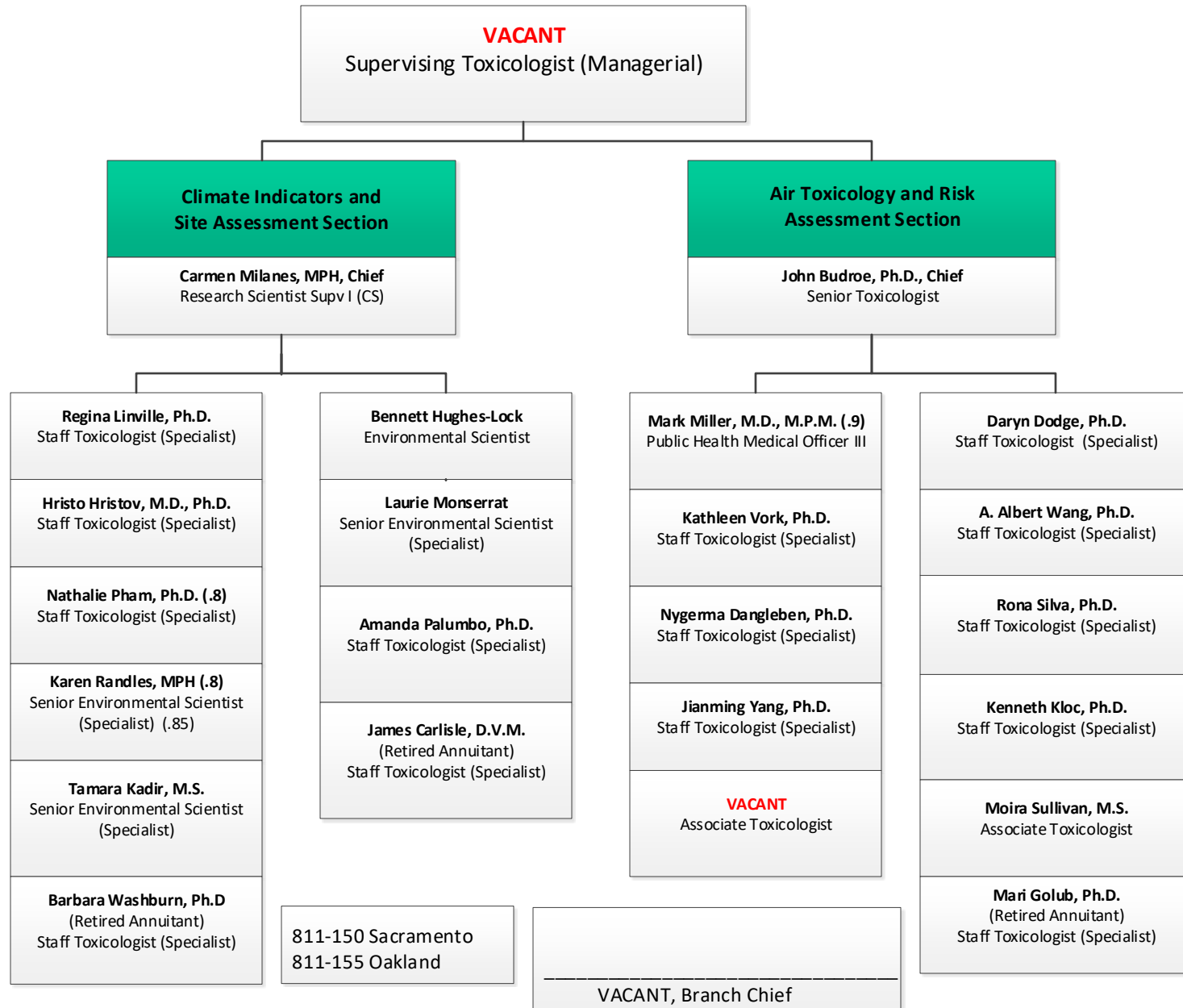


-----  
Martha Sandy, Ph.D., Branch Chief

811-140 Sacramento  
811-145 Oakland

# OFFICE OF ENVIRONMENTAL HEALTH HAZARD ASSESSMENT

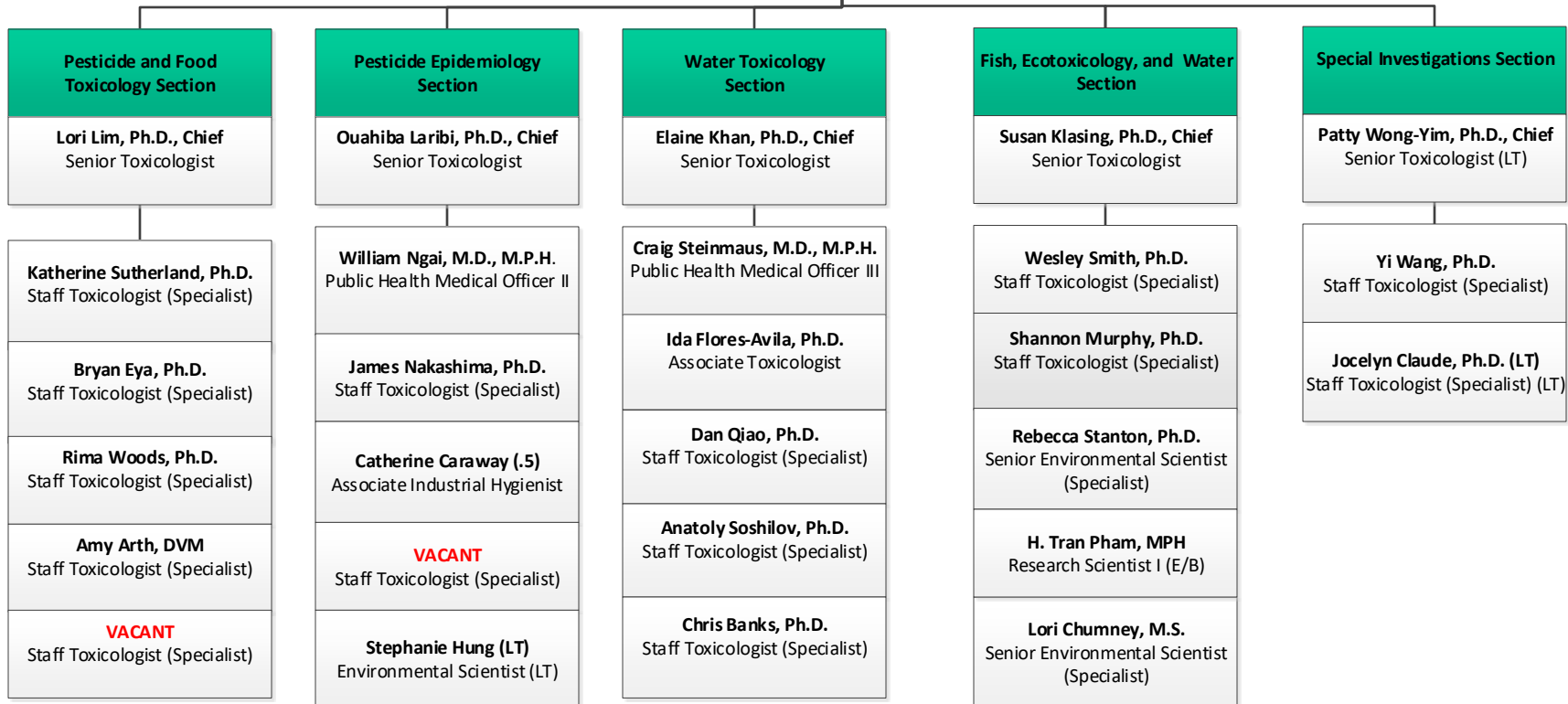
## Air and Site Assessment and Climate Indicators Branch



# OFFICE OF ENVIRONMENTAL HEALTH HAZARD ASSESSMENT

## Pesticide and Environmental Toxicology Branch

David Ting, Ph.D.  
Supervising Toxicologist  
(Managerial)  
Branch Chief



811-160 Sacramento  
811-165 Oakland

-----  
David Ting, Ph.D., Branch Chief