



OIL SPILL NOTIFICATION AND FISHERIES CLOSURE DETERMINATION PROCESS



CDFW-OSPR is notified of an oil spill

CDFW initiates consultation with OEHHA within 24 hours if the following criteria are met:



1+ barrels into inland waters, estuarine waters, enclosed bays, or impacts to coastal shorelines

OR

5+ barrels into open ocean

YES

NO

Does a public health threat exist or likely to exist, as determined by OEHHA?

NO

No fisheries closure needed, but public access may be restricted for spill response and worker safety

YES



Fisheries Closure is Required

See 'Fisheries Re-Opening Process when Sampling is Required' flowchart for closure information



Office of Environmental Health Hazard Assessment
California Environmental Protection Agency

web <https://oehha.ca.gov/fish/oil-spills-seafood>

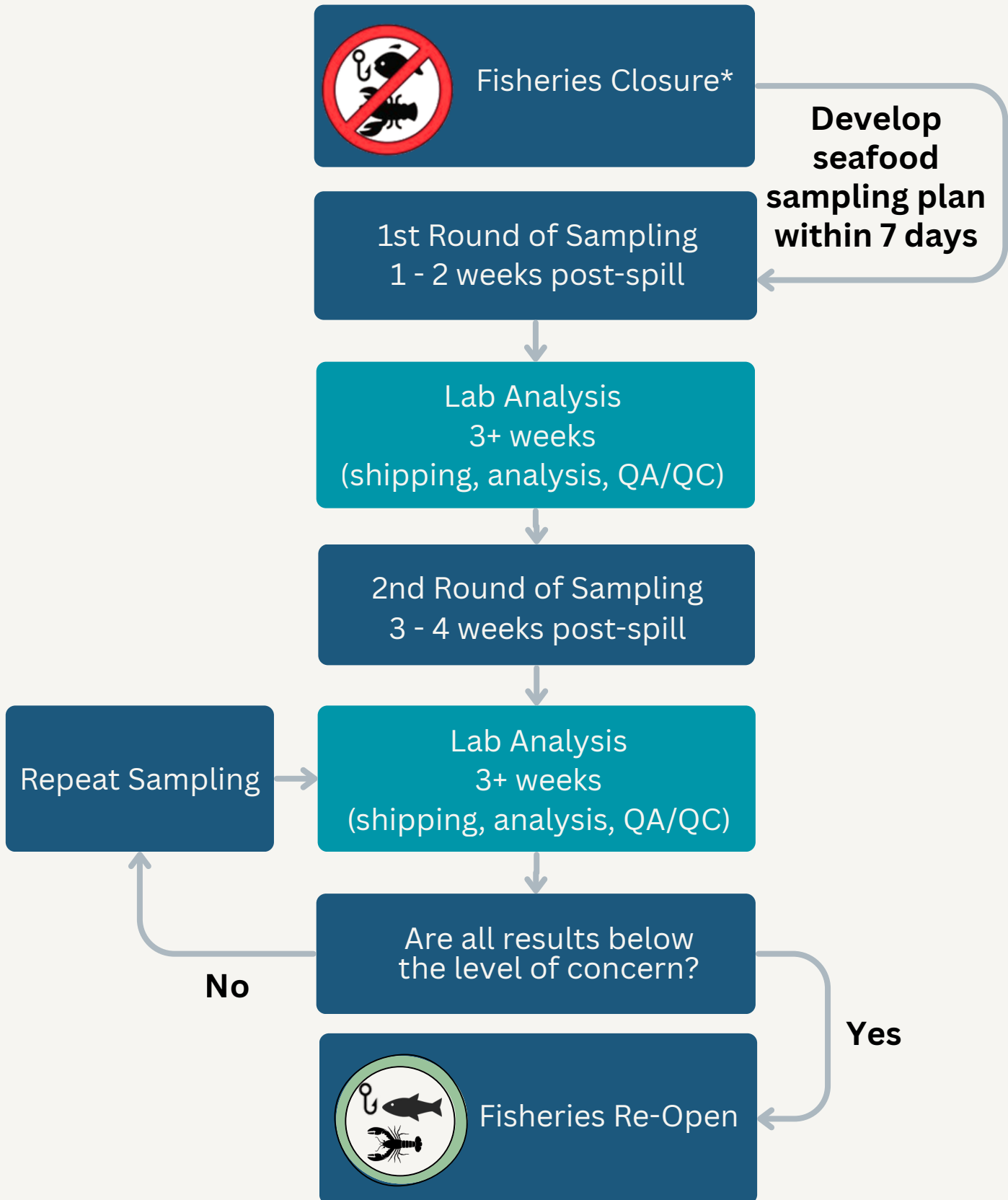
email fish@oehha.ca.gov **phone** (916) 324-7572



SCAN ME



FISHERIES RE-OPENING PROCESS WHEN SAMPLING IS REQUIRED



*See 'Oil Spill Notification and Fisheries Closure Determination Process' flowchart for prior steps.
Fish and Game Code § 5654 establishes the initial timeline for fisheries closure process.