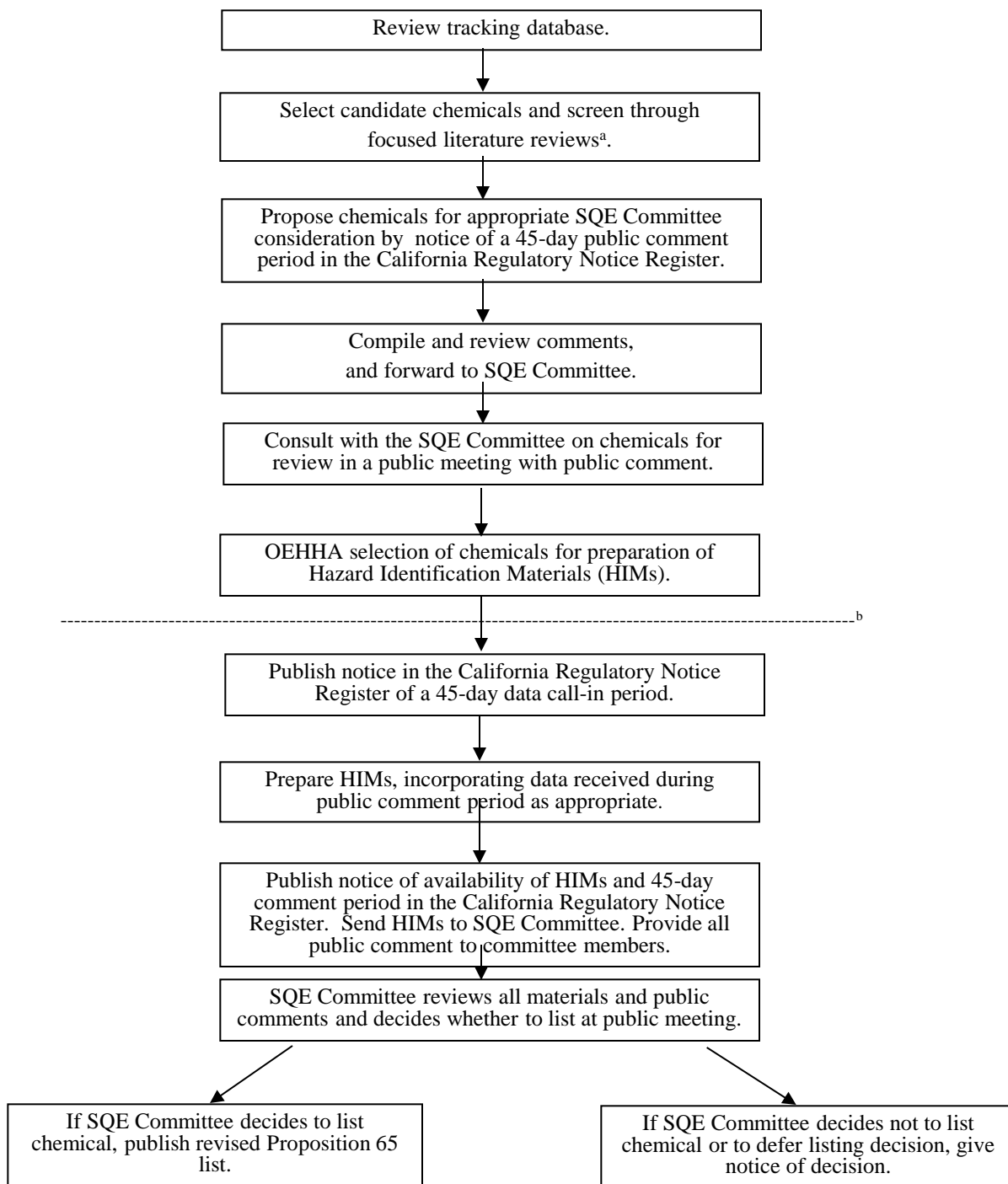


# Listing via the State's Qualified Experts (SQEs) Mechanism; Health and Safety Code §25249.8(b) and Title 27, Cal. Code Regs., section 25305\*



<sup>a</sup> First health screen based on epidemiological evidence; subsequent health screens may be based on animal evidence.

<sup>b</sup> Dotted line indicates where the prioritization process ends and hazard identification process begins.

May 2016

Figure 2