

December 20, 2023

Ms. Monet Vela
Office of Environmental Health Hazard Assessment
1001 I Street, 23rd Floor
Sacramento, California

Dear Ms. Vela:

The National Marine Manufacturers Association (NMMA) appreciates the opportunity to submit comments regarding the Office of Environmental Health Hazard Assessment's (OEHHA) Amendments to Article 6, Clear and Reasonable Warnings Safe Harbor Methods and Content. NMMA appreciates OEHHA's willingness to work with marine manufacturers to modify its original proposal of significant changes to the 'short form' Proposition 65 warning requirements as well as safe harbor language for recreational vessel parts and accessories.

By way of background, NMMA is the leading recreational marine trade association in North America. Recreational boating has a \$230 billion impact on our nation's economy, supporting more than 812,000 jobs and 36,000 businesses across the country. Recreational boat building is also a uniquely American industry with 95 percent of boats sold in the U.S. made in the U.S. In California, the recreational boating industry has a \$17.3 billion impact on the state's economy each year supporting over 48,000 jobs across 2,893 businesses.

Safe Harbor Language for Marine Parts and Accessories

NMMA supports the OEHHA proposed safe harbor language for marine parts and accessories. This language will effectively balance the protection of the health and safety of consumers with the need for workable requirements for marine manufacturers and small businesses.

Proposition 65 Paper Catalogue Warnings

NMMA continues to struggle with how to comply with Proposition 65 warnings in paper catalogues where space is very limited.

OEHHA has provided clear direction for internet purchases where a warning meets the requirements of this rule if it complies with the content requirements of Section 25603(a) or Section 25607 et seq., and complies with subsections (1) and (2) below:

(1) The warning must also be provided by including either one or more of the following methods:

(A) a warning on the product display page, or

(B) a clearly marked hyperlink using the word "WARNING" or the words "CA WARNING" or "CALIFORNIA WARNING" on the product display page that links to the warning, or

(C) an otherwise prominently displayed warning made to the purchaser prior to completing the purchase.

For purposes of this subsection, the warning is not prominently displayed if the purchaser must search for it in the general content of the website.

This direction makes perfect sense and NMMA understands and supports the internet catalogue Proposition 65 warning requirements.

For paper catalogue purchases where space is limited OEHHA has identified a warning as compliant with this direction: “the warning must be provided in the catalogue in a manner that **clearly associates** it with the item being purchased.”

The internet includes technology such as hyperlinks that are not available for paper catalogues. As forementioned, space in a paper catalogue is very limited. The term “clearly associates” is vague and open for critical interpretation. As the changes in this rule will become law, and that law will be primarily if not exclusively enforced by citizen lawsuits, it is important that direction as to what “clearly associates” means and that meaning needs to be clearly understood by the manufacturer, distributor, retailer, and most important the consumer.

NMMA proposes for the record, in appendix one, the following examples where a streamlined paper catalogue warning could be used and approved to direct the consumer to the Proposition 65 warning. Annex page one indicates the complete Prop65 warning text on page one of a proposed paper catalogue. Annex page 2-5 contain examples of multiple products offered for sale within a paper catalogue which include a Prop65 legend at the bottom of each page. These are the same examples that David Marlow, Brunswick Corporation displayed at the OEHHA hearing on December 14, 2023. If OEHHA agrees that this example adequately informs the consumer of a Proposition 65 warning, NMMA strongly urges OEHHA to either describe these examples more clearly in the rule or reference them in a guidance document.

Conclusion

NMMA appreciates OEHAA working with the NMMA on this important rulemaking and we look forward to additional clarification regarding Prop 65 warnings in paper catalogues as shown in the attached examples.

If you have any questions about these comments, please contact me at jwasil@nmma.org.



Jeff Wasil, Senior Director
Environmental & Safety Compliance
National Marine Manufacturers Association



IMPORTANT INFORMATION ABOUT PROPOSITION 65

WARNING

Handling recreational marine vessel parts can expose you to chemicals such as phthalates and lead, which can cause cancer and reproductive harm. To minimize exposure, service the vessel outdoors or in a well-ventilated area, wear gloves, and wash your hands. For more information see www.P65Warnings.ca.gov/marine-vessel-parts.

THE INDUSTRY'S BEST NATIONAL CATALOG ONE STOP SHOPPING!

At Land 'N' Sea & Kellogg Marine Supply, we pride ourselves on listening to you, our customers and what works to ensure your success. As your partner, we aim to help you drive sales and increase your bottom line. Our National catalog will exceed your expectations by presenting our nationwide product selection.

OVER 2000 NEW PRODUCTS

New product part numbers are colored blue for quick reference
100's of updated descriptions, images, and features!





Look for the New symbol!

New **GIMBALED DRINK HOLDER**







Look for the Location Key!

116314

Item#
23-116314

23-116354  (LW)

116354

Color
White
Black

Size
4" H x 4 3/8" W
4" H x 4 3/8" W

Case
6
6

List
10.59 EA
10.59 EA

Self-leveling drink holders with slot for coffee cup handle. For boats, cars, and RVs. Molded plastic. Includes gimbaled surface-mounting bracket. Self-draining.

QUICKLY SEE WHERE ITEMS ARE STOCKED!

A green letter or letters may follow some part numbers to indicate regionally stocked product. Throughout the catalog, there is a location key that identifies these stocking locations*

LET US HELP YOU FIND WHAT YOU NEED!

Log onto www.landnsea.net and check out our "Catalog Search" feature or click on "What's New" to see the latest new products. Use our "Check Stock" feature 24/7 to see real-time product availability! More questions? Contact our knowledgeable, experienced customer service team.

WE VALUE YOUR OPINION! Contact us at marketing@landnsea.net to share your thoughts.

Please check www.landnsea.net for the most current policies and procedures.

* Please note some restrictions and fees may apply, log onto www.landnsea.net for product availability and further ordering information.

Fishing SALE

Prices effective thru 05/05/23 Promo Code: 100

New MARINE INSULATED FISH BAG



Mylar Fillet Bag

- Keep your catch fresh on ice for hours
- Heavy-duty 18-oz. vinyl with 1" closed-cell foam insulation
- Resists tears, UV light, and mildew
- Reinforced bottom for durability
- Freestanding design for easy one-person filling
- Solid noncorrosive molded YKK zippers with 2 zipper pull tabs
- Exterior zippered pocket for additional dry storage
- Two sets of padded handles for two-person carry when fully loaded
- Includes 6 odor proof, waterproof fillet bags with easy-close seal & date lines

Item#	Size	Case	SALE
50-79591 Ⓜ	48" x 26" x 7"	6	207.68 EA
50-79593 Ⓜ	72" x 30" x 8"	6	249.22 EA

New MARINE FILET BAG



- Keep your fillets as fresh as possible
- Odor and waterproof bags
- Non-transparent, 5 mil thick
- Foil lined with zip-lock seal
- Catch and date lines for writing
- Each bag holds up to 1 gallon

Item#	Description	Capacity	Size	Pack	Case	SALE
50-79599	Fillet Bag	1 Gal.	9" x 13.7"	12	20	6.91 PK
50-79598	Fillet Bag	1 Gal.	9" x 13.7"	24	30	11.07 PK

LIVE WELLS



26 Gal. White

Live wells are constructed of one piece, seamless, heavy-duty polyethylene roto molded plastic. Each tank comes with molded in deck fasteners for easy deck hold down and includes drain plugs for quick draining and cleaning. Lids are recessed but allow for quick access. Ready to convert to bait well application with plumbing accessory kit. One Year Warranty.

Item#	Description	Capacity	Size	SALE
114-042282W Ⓜ	White	26 Gals.	16" H x 28" L x 16.38" W	158.78 EA

MINI-JACKER™



Designed for clamp-on mount outboard motors up to 35 hp. Improves performance and handling of smaller or lighter boats. Also allows mounting of long shaft motors to shorter shaft transom boats. Engine mounting surface is 11 1/2" x 10".

Item#	SALE
232-MJ1DP Ⓜ	146.25 EA

FACE GUARDS



48001 Waves 48002 Mahi 48003 Bass 48004 Marlin 48005 Compass Rose 48006 T-Map

Offers superior protection from UV rays, dust, bugs, fumes, and other elements. Our Face Guard collection is built with a comfortable 100% super soft, breathable microfiber polyester fabric that provides a comfortable lightweight, and stretchy feeling. Face Guards can be worn 10+ different ways - including face masks, neck gaiters, head wraps, scarves, beanies, helmet or hat liners, do-rags, and much more.

- Seamless
- Odor Control
- Quick-Drying
- UV Protection
- Approx. 10" x 20"
- Moisture Wicking
- One Size Fits Most
- Machine Washable
- 100% Polyester Microfiber

Item#	Color	Case	SALE
505-48001	Waves	12	8.99 EA
505-48002	Mahi	12	8.99 EA
505-48003	Bass	12	8.99 EA
505-48004	Marlin	12	8.99 EA
505-48005	Compass Rose	12	8.99 EA
505-48006	T-Map	12	8.99 EA

FACE GUARD COUNTER DISPLAY



Model 48007 Includes:
2 of each style of Face Guard.
Total: 12 pcs. Plus Free display strip (26" long, w/hook)

Item#	Description	Case	SALE
505-48007	Face Guard Pre-Pack	60	113.89 PK



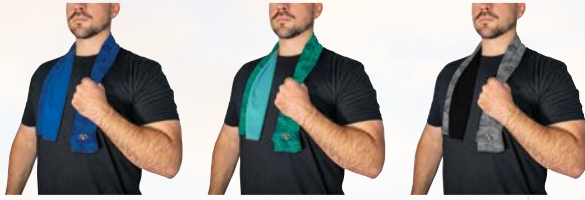
800.432.7652 • Fax: 800.942.1947
landnsea.net



800.243.9303 • Fax: 800.628.1304
landnsea.net

Effective thru 05/05/2023 • ©2023 Land 'N' Sea Distributing Inc. • Prices subject to change without notice. Not responsible for typographical errors. Promo Code: 100
No portion of this publication may be reproduced or copied without the written permission of Land 'N' Sea Distributing Inc.

REVERSIBLE COOLING TOWELS



48100 Blue

48101 Green

48102 Gray

Reversible cooling towels for those who stay outdoors. To activate cooling technology simply soak in water, wring out and snap three times; to reactivate, re-soak and re-snap.

- 100% Polyester
- Reversible design
- Soft and absorbent when dry
- Stays cool for hours when wet
- Reusable and machine washable
- UPF 50 sun protection provides instant cooling relief
- Chemical-Free way to stay cool, while also providing UV protection

Item#	Color	Size	Case	SALE
505-48100	Blue	12" x 39"	12	11.99 EA
505-48101	Green	12" x 39"	12	11.99 EA
505-48102	Gray	12" x 39"	12	11.99 EA

DRY BAG/COOLER BACKPACK



Whistle/Buckle Closure

- Use as a dry bag or soft-sided cooler/warmer
- PE inside layer keeps contents cool or warm
- Waterproof roll top—secures with hook & loop
- Top grab strap, adjustable double shoulder straps and waist belt
- Front water-resistant zipper and rust-proof buckle closures
- Included safety feature—(1) orange whistle/buckle closure
- Capacity: 25.4 Qt / 24 L

Item#	Size	Case	SALE
505-50070	Outer Dims: 13"L x 6"W x 24.4"H	10	59.97 EA

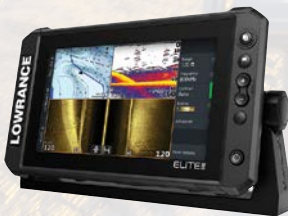
KITE FISHING ROD HOLDER



- 3 Flared 1 3/4" diameter rod holders
- Fits most gunnel rod holders

Item#	Material	Case	SALE
50-89381	304 Stainless Steel	1	144.70 EA

ELITE FS FISHFINDER/CHARTPLOTTER LOWRANCE



- ActiveTarget™ Live Sonar ready
- Active Imaging™ 3-in-1 ready
- FishReveal™
- Preloaded C-MAP® Contour+ with 1-foot contours on 8,900 lakes, plus mapping options including C-MAP, Navionics® and more
- C-MAP® Easy Routing, Navionics® Autorouting capability
- C-MAP Genesis Live onscreen mapping
- High-resolution multi-touch touchscreen
- Integrated wireless, NMEA 2000® and Ethernet connectivity
- Full touchscreen control of Power Pole® anchors and Ghost® Trolling Motor

Item#	Model #	Display	SALE
149-00015703001	Elite FS7 w/C-MAP Contour+, No transducer	7"	601.14 EA
149-00015688001	Elite FS7 w/C-MAP Contour+ & Active Imaging 3-in-1 Transducer	7"	773.14 EA
149-00015707001	Elite FS9 w/C-MAP Contour+, No transducer	9"	730.14 EA
149-00015692001	Elite FS9 w/C-MAP Contour+ & Active Imaging 3-in-1 Transducer	9"	859.14 EA

New HDS PRO FISHFINDER/CHARTPLOTTER LOWRANCE



- SolarMAX™ HD Touchscreen viewable at extreme angles and through polarized lenses
- High-definition Active Imaging™ HD ready (CHIRP/SideScan/DownScan Imaging™)
- High-resolution ActiveTarget® 2 Live Sonar ready
- FishReveal™ with new SideScan view*, as well as Downscan (*Requires S3100 and compatible transducer)
- Preloaded C-MAP® DISCOVER OnBoard charts with 1-foot contours on 19,000+ US Lakes, 9,400+ Canadian Lakes
- Real-time mapping available with C-MAP® Genesis Live
- Support for ActiveTarget® Scout and Ghost® Trolling Motor 360 chart overlay views
- Touchscreen control of Power-Pole® anchors, Ghost® Trolling Motor, Autopilot and Lowrance Outboard Pilot
- NMEA 2000®, Wireless and Bluetooth®, connectivity
- Wide range of optional chart upgrades including C-MAP® REVEAL, Navionics®, Florida Marine Tracks and more

Item#	Model #	Display	SALE
149-00015981001	HDS PRO 9 w/C-MAP DISCOVER OnBoard + 9" Active Imaging HD	9"	1891.14 EA
149-00015984001	HDS PRO 10 w/C-MAP DISCOVER OnBoard + Active Imaging HD	10"	2407.14 EA
149-00015987001	HDS PRO 12 w/C-MAP DISCOVER OnBoard + Active Imaging HD	12"	2966.14 EA
149-00015990001	HDS PRO 16 w/C-MAP DISCOVER OnBoard + Active Imaging HD	16"	4299.14 EA

NSS EVO3S MULTIFUNCTION DISPLAY (MFD)



EVO3S 9"

EVO3S 16"

A high-definition display, great for center consoles and other powerboats. Featuring the iMX 8 high-performance processor, with superfast response times, this compact package delivers extensive functionality. Enjoy stunning clarity and ultra-wide viewing angles, combined with an all-weather touchscreen and keypad for total control in all conditions. Includes preloaded C-MAP® charts.

- MX 8 Integrated six-core processor
- SolarMAX™ IPS display with ultra-wide viewing angles; viewable through Polarized sunglasses
- Switch seamlessly between touchscreen and keypad control
- Built in 1kW CHIRP echosounder
- Built-in GPS receiver and wireless connectivity
- Control Simrad sonar, radar, autopilot, and more
- Industry-standard connectivity to engines, sound system, and more
- TripIntel™ trip planning and for automatic routing
- Flush or bracket mounting
- Download the Simrad App and connect with smartphones, tablets, and internet hotspots
- Preloaded C-MAP® US Enhanced charts provide detailed mapping with 1-foot contours, easy routing and C-MAP® Reveal data in Florida
- Select packages include Halo 20+ Radar

Item#	Model	SALE
941-00015402001	NSS9 EVO3S w/ C-MAP® US	2063.14 EA
941-00015404001	NSS16 EVO3S w/ C-MAP® US	4729.14 EA

ELEMENT™ HV SONAR/GPS MULTI FUNCTION DISPLAY

Raymarine



7 HV

Bright and Rugged - Sunlight viewable LCD display w/integrated GPS/GNSS receiver
Superior HyperVision™ - 1.2 MHz CHIRP sonar for much higher resolution imaging
RealVision™ 3D Built-In - Accurately identify the location of ledges, channel beds, and other contour changes
Fast Quad-Core Processor - For instantaneous chart re-draw and sharp 3D imaging
All-in-one Transducer - Combines HyperVision, DownVision, SideVision, RealVision, and conventional CHIRP sonar channels in

one (Included w/select models)
Smart Mapping - Support for Raymarine LightHouse NC2 charts with Fishing Hot Spots®, Navionics, and C-MAP
LightHouse Sport Operating System - Optimized for fishing, it's fast and easy-to-learn
Intuitive Controls - An oversized waypoint key and 3 user-programmable keys
Make Your Own Maps - RealBathy™ personal sonar mapping and Navionics SonarCharts Live support

Item#	Display	Description	Size	SALE
152-E7053205NAG	7" (800 x 480)	Element 7 HV w/HV-100 Transom Xducer & Navionics Nav+ US & Canada Chart	9.5"W x 5.3"H x 2.4"D	703.99 EA

AXIOM™ PRO HIGH PERFORMANCE MULTIFUNCTION NAVIGATION DISPLAY

Raymarine



12"

Available with RealVision 3D, 1kW CHIRP sonar, and Raymarine HybridTouch control, Axiom Pro is the new standard for "all-in-one" display. And with a blazing fast quad core processor, a super bright IPS display, and the smart LightHouse OS, Axiom Pro delivers a fluid and intuitive navigation experience. Axiom Pro is easy to expand into an advanced navigation network that includes multiple Axiom displays, CHIRP radar, Evolution autopilot, FLIR thermal night vision technology, and more.

• **RVX** - MFD with RealVision 3D and 1kW CHIRP, **RVX w/NAG** also includes Navionics NAV+ North America Chart

Item#	Model	Display	SALE
152-E7037200NAG	AXIOM PRO 12 RVX w/NAG	12.1"	3599.99 EA

QUANTUM™ WIRELESS CHIRP RADOME

Raymarine



- Input Voltage: 12 or 24 Vdc
- Networking: Wi-Fi or wired Ethernet (RayNet)
- Power Consumption: Transmit mode 17W; standby mode 7W; sleep mode 2W
- 1/8 to 24 nautical miles max range
- 20W Peak Power Output
- Pulse Widths (3 dB): 40 ns to 14.7 µs
- CHIRP Lengths: 400 ns to 20 µs
- CHIRP Bandwidth: Up to 32 MHz
- Beamwidth (nominal): 4.9° horizontal and 20° vertical

Item#	Model	Description	SALE
152-E70344	Q24W	18" Wi-Fi Only w/10m Power Cable	1471.99 EA

QUANTUM 2 DOPPLER RADOME

Raymarine



- Auto or manual MARPA target tracking
- Adjustable TrueTrails target history
- Detects contacts as close as 18'
- 24-mile range
- Starts up and is ready to go in seconds
- Superior interference rejection
- Simplified installation with Wi-Fi or thin wire
- Fits Raymarine bolt pattern
- Up to 50% lighter than magnetron radars
- Low power consumption for battery life under sail

Item#	Description	SALE
152-T70416	Quantum 2 Radome, w/10m Power & Data Cables	1847.99 EA

ECHOMAP™ UHD2 SV SERIES CHARTPLOTTER/SONAR

GARMIN.



sv 7"



sv 9"

- SONAR SUPPORT: Crisp, clear traditional and brilliant ClearVü sonar
 - VIVID COLOR PALETTES: Its easier than ever to distinguish targets and structure
 - PRELOADED CHARTS: Available built-in LakeVü g3 inland maps, BlueChart g3 coastal charts or worldwide basemap with support for Navionics+™ and Vision+™ cartography
 - WIRELESS NETWORKING: Wirelessly share information such as sonar, waypoints and routes with compatible ECHOMAP UHD2 units
 - ACTIVECAPTAIN® APP: Built-in Wi-Fi connectivity pairs with the free all-in-one mobile app
- ECHOMAP™ UHD2 sv Series:** Features Ultra High-Definition SideVü & ClearVü and traditional CHIRP sonar capability.

Item#	Model	Display	SALE
322-0100268400	73sv without Transducer; Includes Garmin Navionics+ U.S. Inland Mapping	7"	679.99 EA
322-0100268401	73sv with GT54UHD-TM Transducer and Garmin Navionics+ U.S. Inland Mapping	7"	759.99 EA
322-0100268500	74sv without Transducer; Includes Garmin Navionics+ U.S. Coastal & Great Lakes Mapping	7"	759.99 EA
322-0100268501	74sv with GT54UHD-TM Transducer and Garmin Navionics+ U.S. Coastal & Great Lakes Mapping	7"	839.99 EA
322-0100268900	94sv without Transducer; Includes Garmin Navionics+ U.S. Coastal & Great Lakes Mapping	9"	959.99 EA
322-0100268901	94sv with GT56UHD-TM Transducer and Garmin Navionics+ U.S. Coastal & Great Lakes Mapping	9"	1039.99 EA

New ECHOMAP™ ULTRA SV SERIES GPS/CHARTPLOTTER/SONAR

GARMIN.



- Bright, sunlight-readable keyed-assist touchscreen display
- Supports a variety of Garmin transducers (sold separately), including LiveScope all-seeing live sonar
- Built-in UHD sonar provides Garmin CHIRP traditional sonar plus Ultra High-Definition ClearVü™ and SideVü™ scanning sonars when paired with a compatible UHD transducer
- High-contrast vivid scanning sonar color palettes
- Built-in Garmin Navionics+ integrated coastal and inland mapping with Auto Guidance+™ technology. Includes a 1-year subscription for downloadable daily updates and more
- Optional Garmin Navionics Vision+™ premium cartography, featuring high-resolution relief shading, satellite imagery, sonar imagery and more
- NMEA 2000 Network compatibility: Connect to your compatible autopilots, digital switching, weather, Fusion-Link™ audio system, media, VHF, AIS, engine data, heading sensors and more from one screen
- Built-in Wi-Fi® connectivity pairs with the free all-in-one mobile app for access to the OneChart™ feature, smart notifications, software updates, Garmin Quickdraw Community data and more
- FORCE® Trolling motor compatibility

Item#	Model	Display	SALE
322-0100211250 ③	ECHOMAP™ Ultra 106sv Without Transducer	10"	1399.99 EA
322-0100252751 ③	ECHOMAP™ Ultra 106sv With GT56UHD-TM Transducer	10"	1719.99 EA
322-0100211450 ③	ECHOMAP™ Ultra 126sv Without Transducer	12"	2039.99 EA
322-0100252951 ③	ECHOMAP™ Ultra 126sv With GT56UHD-TM Transducer	12"	2359.99 EA

New GPSMAP® 1243 SERIES GPS CHARTPLOTTER W/TOUCHSCREEN

GARMIN.



- Slimline design w/edge-to-edge glass
- High-resolution IPS displays
- Built-in Garmin Navionics+ integrated coastal and inland mapping
- Optional upgrade to Garmin Navionics Vision+™ premium chart subscription
- Sailassist™ features; View laylines, race start line guidance, enhanced wind rose, heading and course-over-ground lines, true wind data fields and tide/current/time slider, wind angle, set and drift, and more
- Sailing Polars, Use the polar table to see key data, including how fast you should go at a certain wind angle and speed
- Garmin Marine network for compatible Garmin devices
- NMEA 2000® & NMEA 0183 networks
- Built-in Wi-Fi® pairs with the free Activcaptain® APP mobile app
- Engine connectivity to different engines, including select Yamaha
- OneHelm feature brings all the operations and capabilities of select third-party devices, such as EmpirBus™ digital switching, on one screen

xsv Units: Built-in Ultra High-Definition SideVü and ClearVü™ scanning sonars also supports 1 kW CHIRP traditional sonar capabilities, Pair with Panoptix or LiveScope™ easy-to-interpret live sonar (transducer required, sold separately) to see all around your boat in real time.

In The Box: GPSMAP unit, microSD™ card preinstalled, Power cable, NMEA 2000® T-connector, NMEA 2000 drop cable (2 meters), Bail mount kit with knobs, Flush mount kit, Protective cover, Trim piece snap covers.

xsv Units also include: 8-pin to 12-pin transducer adapter cable.

xsv with Radar also include: GMR 18 HD+ radome, Mounting hardware kit, Power cable (15 m), Network cable (15 m).

Item#	Model	Display	SALE
322-0100236761 ③	GPSMAP® 1243xsv SideVü, ClearVü and Traditional CHIRP Sonar with Mapping	12"	2399.99 EA
322-0100236780 ③	GPSMAP® 1243xsv SideVü, ClearVü and Traditional CHIRP Sonar with Mapping & GMR™ 18 HD+ Radome	12"	3519.99 EA

FOLD-N-STOW FISHING NET



Folded

Fold down for convenient and compact storage or extend for added reach. A flip of the handle opens and locks the net into place. Easily pull back the trigger and the net collapses down into an easily stowable size. Constructed of durable knot-free netting.

Item#	Description	Size	Case	SALE
23-127732 ③	Medium	47" L x 16" W x 16" D	4	13.56 EA
23-127742	Large Heavy Duty	81" L x 27" W x 27" D	4	21.88 EA

COCKPIT ORGANIZER



Large Super Suction™ cups. Mounts on any smooth surface. Can be permanently attached with screws. Holds fishing gear, binoculars and other items. Non-corrosive.

Item#	Color	Size	Case	SALE
50-79321 ③	White	6" H x 12" W x 4" D	6	11.39 EA

ULTIMATE OUTRIGGER RIGGING KIT

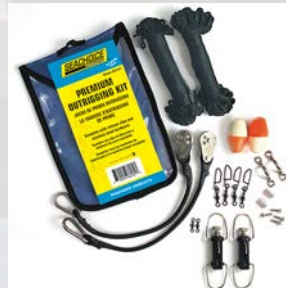


For poles up to 25 feet, Kit Contains:

- (2 Ea.) Outrigger clips (88041)
- (2 Ea.) Pro outrigger snubbers (88051)
- (2 Ea.) Stainless Steel eye straps (28801)
- (1 Ea.) #400 Black mono line - 100' (88061)
- (4 Ea.) Line clamps

Item#	Case	SALE
50-88121 ③	10	25.06 EA

PREMIUM OUTRIGGER RIGGING KIT



Complete with release clips and stainless steel hardware. Rigs 1 pair of outriggers up to 22'.

Kit Contains:

- (2) Release clip
- (2) Shock cord w/SS snaps & pulley
- (2) 100 ft. UV Protected black dacron line
- (2) Barrel swivels
- (4) Snap swivels
- (2) Crimps
- (2) SS Eye Strap
- (2) Balsa wood floats
- (2) SS Screws

Item#	Case	SALE
50-88131 ③	10	61.56 EA