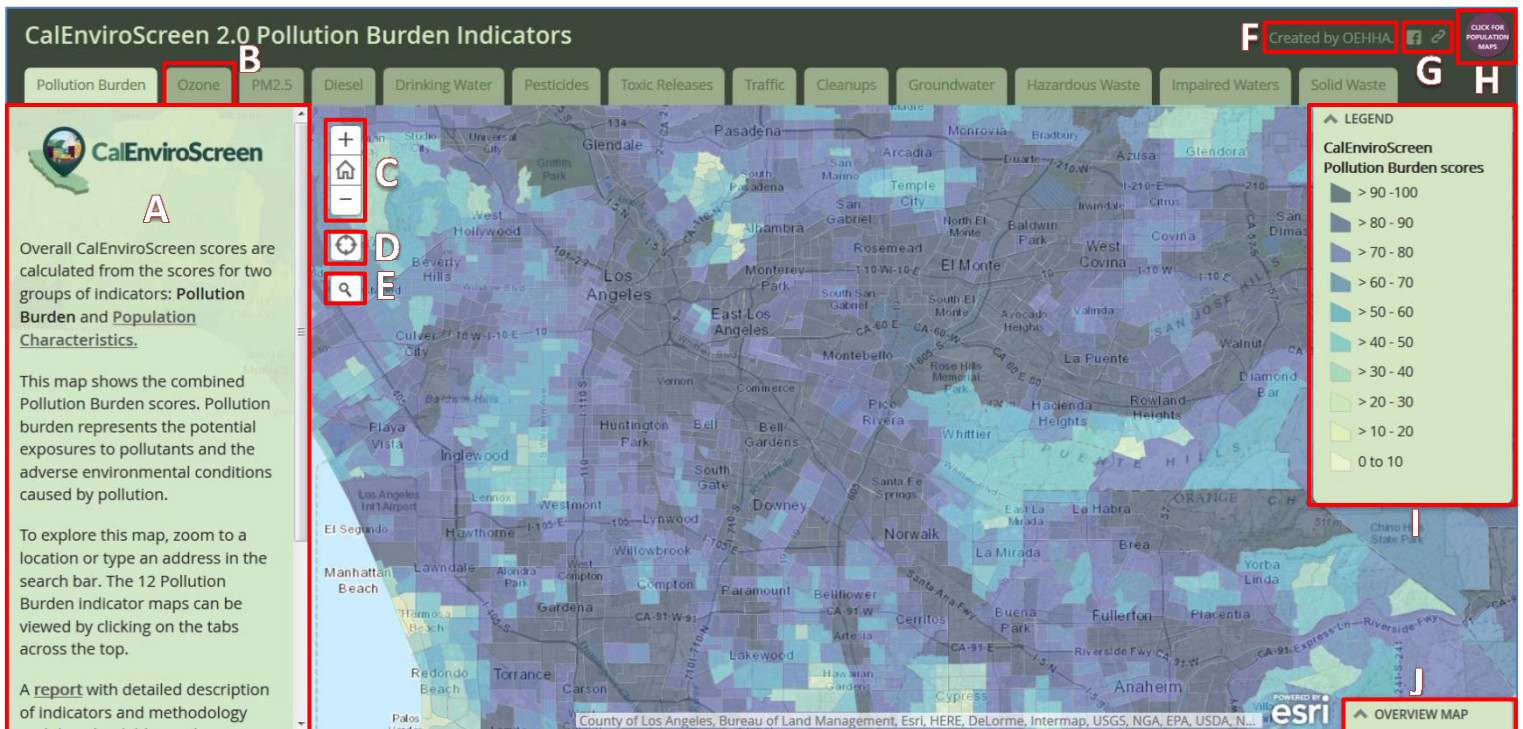


Quick guide for navigating the [CalEnviroScreen 2.0 Indicator Maps](#)

Pollution Burden: <http://arcg.is/1Ct87cL> Population Characteristics: <http://arcg.is/1GmdVVF>



- A. **Description window:** This window contains information about the map. It changes based on the selected map tab.
- B. **Map tabs:** Click on a map tab to select a CalEnviroScreen indicator and view the indicator results.
- C. **Navigation:** Use these buttons or the wheel on your mouse to zoom in and out. Click anywhere on the map screen and drag to pan around. The "home" button returns you to the original location in Los Angeles. Once you are zoomed in, click on a census tract to view additional information on the indicator in a popup window.
- D. **Find my location:** Clicking this button will zoom to your location if it is shared on your computer or device.
- E. **Search:** Type in a location to search for an address, ZIP code or city. Press enter or select the location you wish to zoom to.
- F. **OEHHA website:** Click here to go to the OEHHA CalEnviroScreen website.
- G. **Share buttons:** Use this to share the map via email or social media.
- H. **Population Characteristics maps:** Click here to view the indicator maps that make up the Population Characteristics portion of CalEnviroScreen. (Note: when on the Population Characteristics Indicator maps, clicking the comparable button takes you to the Pollution Burden Indicator maps.)
- I. **Legend:** The legend describes what the colors on the map represent.
- J. **Overview Map:** A smaller map will appear on the right side of the screen, showing your location zoomed out.

| Contaminant or Violation | Percentile |
|-----------------------------|------------|
| Arsenic | 73.86 |
| Cadmium | 0 |
| Chromium, Hexavalent | 45.98 |
| Dibromochloropropane (DBCP) | 0 |